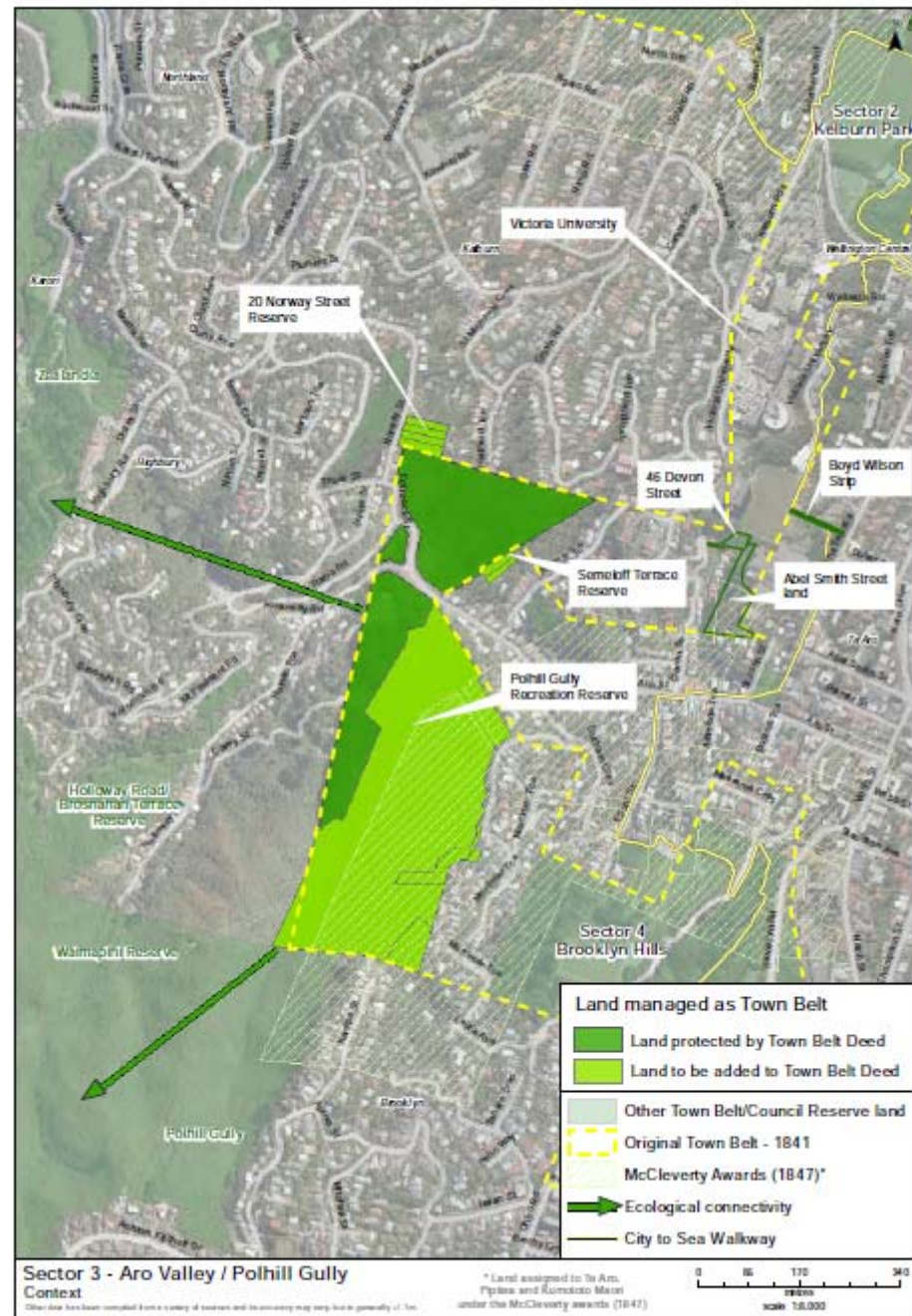


Aro Valley Community Council submission

We strongly support the draft Town Belt Management Plan with its focus on increasing and preserving the Town Belt and maximising ecological and recreational values

Focus on Sector 3: Aro Valley/ Polhill Gully

We strongly support adding the Polhill Gully reserve (within original Town Belt), Semeloff Tce, and 20 Norway St reserves (both adjacent to original Town Belt)



Aro Valley Community Council submission

Retention of 46 Devon Street and Abel Smith Street land

We believe that the 'Devon Street Gully' [ref 8.3.2.3] made up of 46 Devon Street and Abel Smith Street land should be returned to the Town Belt:

- ecological value
- recreational use especially by Te Aro School
- connectivity between Aro Valley and Te Aro School,
- part of heritage value streetscape – Devon St features in WCC Heritage Trail: “The street is worth seeing for its pristine streetscape.”



Aro Valley Community Council submission

Retention of 46 Devon Street and Abel Smith Street land [ref 8.3.2.3]

Is the Devon Street Gully an island?

The loss of original Town Belt area in western edge of horseshoe represents the most significant break in the chain of green spaces:

- upper Adams Terrace
- Landcross Street
- Victoria University precinct
- Kelburn residential areas

Is Kelburn Park an island?



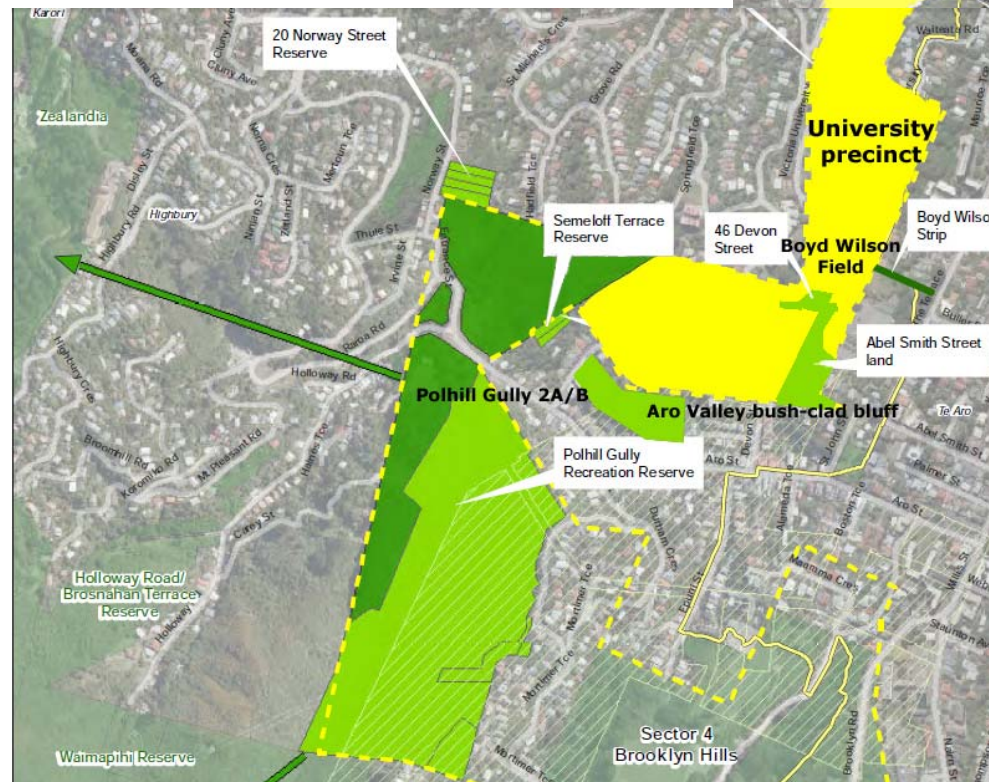
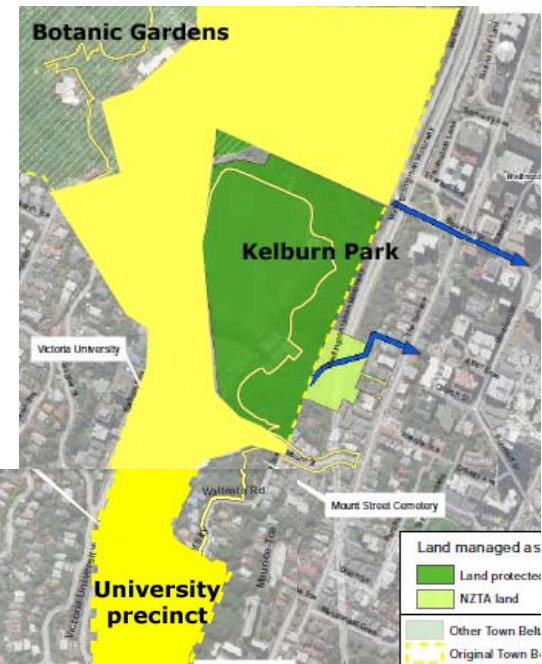
Aro Valley Community Council submission

Addition of Polhill Gully Reserve 2A and 2B, plus protecting/adding bush-clad slopes on the north side of the Aro Valley would recreate this part of the Town Belt and support retention of 46 Devon Street and Abel Smith Street land [ref 8.3.2.3]

Polhill Gully 2a and 2B
(formerly 10-16 Adams Tce)
LINZ ref CT56A/334

High ecological value bush-clad bluff on northern side of Aro Street:

- 146J (Lot 5 DP358992)
- 146H (Lot 8 DP339719)
- 142-144 [Polhill Gully 12A block]
- 132-140 Aro St (WN56A/333)
[Sec 14 TOWN of Wellington]



Aro Valley Community Council submission

Recreating this part of the Town Belt to support retention of 46 Devon Street and Abel Smith Street land [ref 8.3.2.3] – land details

Council Reserve: Polhill Gully 2a and 2B (was 10-16 Adams Tce) LINZ ref CT56A/334

High ecological value bush-clad bluff on northern side of Aro Street:

- Upper part of 146J (Lot 5 DP358992)
- Upper part of 146H (Lot 8 DP339719)
- Upper part of 142-144 Aro St [Polhill Gully 12A block]
- Covenanted part of 132-140 Aro St (WN56A/333) [Sec 14 TOWN of Wellington]
- 16 Essex St (WN469/275)

